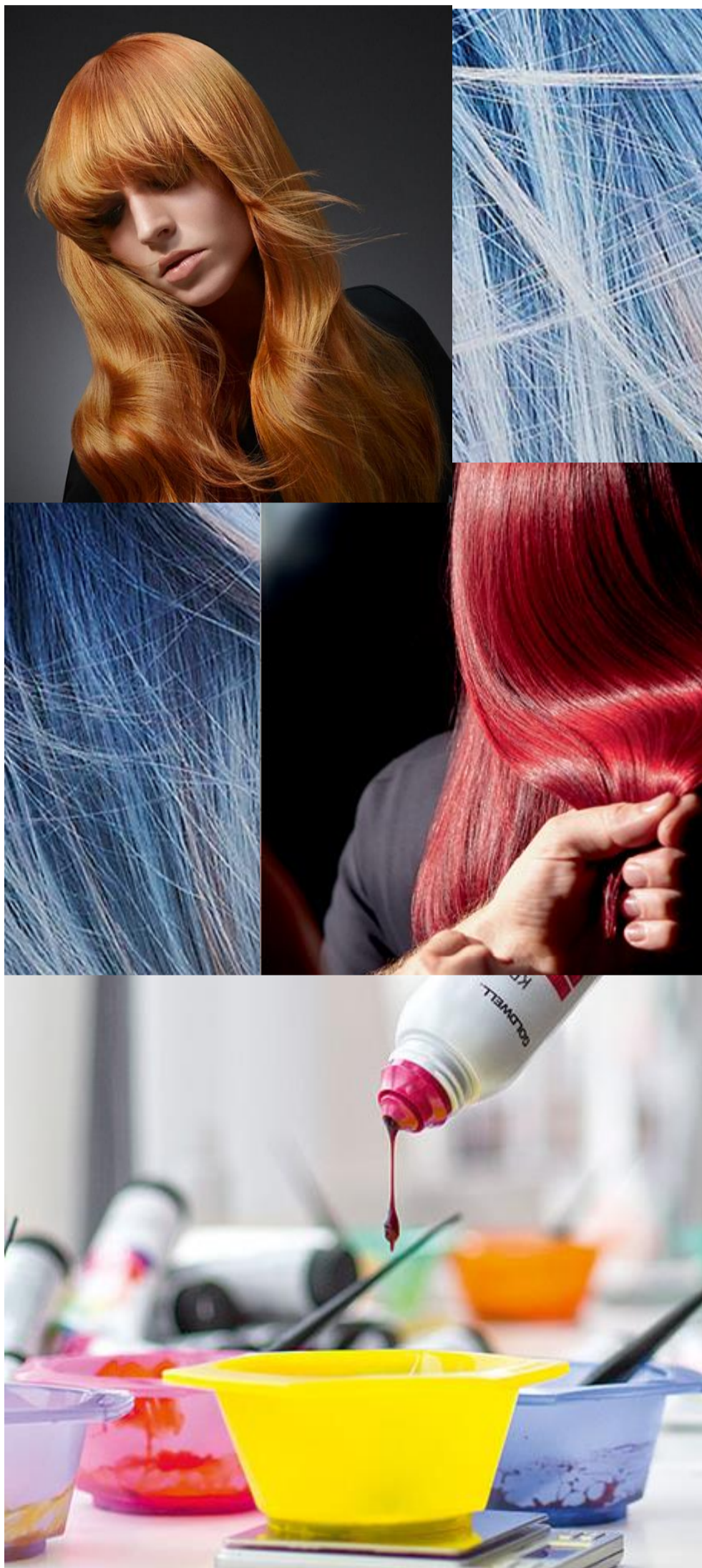


KAO SALON  
**VIRTUAL**  
**EDUCATION.US**  
 GOLDWELL. KMS ORIBE

“To be the best, you have to learn from the best”



Date & Time	Class Topic
<b>JULY</b>	
Tuesday 7/13 10AM	<a href="#">Elumen Paintbox</a>
Tuesday 7/13 12PM	<a href="#">NuWave Experience</a>
Wednesday 7/14 9AM	<a href="#">Dimensions of Light</a>
Wednesday 7/14 12PM	<a href="#">Topchic and Colorance Revealed - Grey Coverage</a>
Tuesday 7/20 12PM	<a href="#">Goldwell Revealed - Portfolio Review</a>
Tuesday 7/20 2PM	<a href="#">Dimensions of Creativity</a>
Wednesday 7/21 10AM	<a href="#">Topchic &amp; Colorance Revealed - Build Your Foundation</a>
Wednesday 7/21 1PM	<a href="#">Goldwell Revealed - Minimal Work with Maximum Results</a>
Tuesday 7/27 11AM	<a href="#">Dimensions of Toning</a>
Tuesday 7/27 1PM	<a href="#">Customized Styling Revealed - LIVE Techniques &amp; Inspiration</a>
Wednesday 7/28 9AM	<a href="#">Goldwell Revealed – Color Challenged Solved</a>
Wednesday 7/28 11AM	<a href="#">Elumen Paintbox</a>
<b>AUGUST</b>	
Tuesday 8/3 10AM	<a href="#">Goldwell Revealed - Portfolio Review</a>
Tuesday 8/3 12PM	<a href="#">Dimensions of Light</a>
Wednesday 8/4 9AM	<a href="#">Goldwell Revealed - Minimal Work with Maximum Results</a>
Wednesday 8/4 11AM	<a href="#">Kerasilk Experience - Smoothing &amp; DeFrizz Services</a>
Tuesday 8/10 11AM	<a href="#">Goldwell Revealed – Color Challenged Solved</a>
Tuesday 8/10 1PM	<a href="#">Goldwell Revealed - Color My Textured Hair</a>
Wednesday 8/11 10AM	<a href="#">Dimensions of Creativity</a>
Wednesday 8/11 12PM	<a href="#">NuWave Experience</a>
Tuesday 8/17 9AM	<a href="#">Elumen Paintbox</a>
Tuesday 8/17 12PM	<a href="#">Dimensions of Light</a>
Wednesday 8/18 10AM	<a href="#">Topchic &amp; Colorance Revealed - Build Your Foundation</a>
Wednesday 8/18 1PM	<a href="#">Customized Styling Revealed - LIVE Techniques &amp; Inspiration</a>
Tuesday 8/24 10AM	<a href="#">NuWave Experience</a>
Tuesday 8/24 12PM	<a href="#">Goldwell Revealed - Minimal Work with Maximum Results</a>
Wednesday 8/25 11AM	<a href="#">Dimensions of Toning</a>
Wednesday 8/25 1PM	<a href="#">Goldwell Revealed - Upgrade Your Service Potential</a>

Scan me with your smartphone or click on the linked class topics to register



All class times are listed in Eastern Standard Time. Use this [link](#) to convert the time to your city.



KAO SALON  
**VIRTUAL**  
**EDUCATION.US**  
 GOLDWELL. KMS ORIBE



**YOUR IMAGINATION**




**IS YOUR ONLY LIMIT**



Date & Time	Class Topic
Tuesday 9/7 11AM	<a href="#">Unboxing Revealed - LIVE Pop Up Event</a>
Tuesday 9/7 12PM	<a href="#">Dimensions of Light</a>
Wednesday 9/8 11AM	<a href="#">Goldwell Revealed - Portfolio Review</a>
Wednesday 9/8 1PM	<a href="#">Goldwell Revealed - Minimal Work with Maximum Results</a>
Tuesday 9/14 9AM	<a href="#">NuWave Experience</a>
Tuesday 9/14 11AM	<a href="#">Goldwell Revealed - Color My Textured Hair</a>
Wednesday 9/15 10AM	<a href="#">Topchic &amp; Colorance Revealed - Build Your Foundation</a>
Wednesday 9/15 1PM	<a href="#">Elumen Paintbox</a>
Tuesday 9/21 11AM	<a href="#">Topchic and Colorance Revealed - Grey Coverage</a>
Tuesday 9/21 1PM	<a href="#">Dimensions of Toning</a>
Wednesday 9/22 10AM	<a href="#">Kerasilk Experience - Smoothing &amp; DeFrizz Services</a>
Wednesday 9/22 2PM	<a href="#">Customized Styling Revealed - LIVE Techniques &amp; Inspiration</a>
Tuesday 9/28 10AM	<a href="#">Goldwell Revealed - Portfolio Review</a>
Tuesday 9/28 1PM	<a href="#">Dimensions of Creativity</a>
Wednesday 9/29 9AM	<a href="#">Goldwell Revealed - Color Challenged Solved</a>
Wednesday 9/29 11AM	<a href="#">NuWave Experience</a>

**All class times are listed in Eastern Standard Time. Use this [link](#) to convert the time to your city.**

Scan me with your smartphone or click on the linked class topics to register



“To be the best, you have to learn from the best”



KAO SALON  
**VIRTUAL**  
**EDUCATION.US**  
 GOLDWELL. KMS ORIBE



Date & Time	Class Topic
Tuesday 10/5 9AM	<a href="#">New Products Revealed – 30 Minutes LIVE</a>
Tuesday 10/5 10AM	<a href="#">Topchic and Colorance Revealed - Grey Coverage</a>
Tuesday 10/5 12PM	<a href="#">Dimensions of Light</a>
Wednesday 10/6 10AM	<a href="#">Goldwell Revealed – Color Challenged Solved</a>
Wednesday 10/6 12PM	<a href="#">Goldwell Revealed - Portfolio Review</a>
Wednesday 10/6 2PM	<a href="#">New Products Revealed – 30 Minutes LIVE</a>
Tuesday 10/12 9AM	<a href="#">Goldwell Revealed - Upgrade Your Service Potential</a>
Tuesday 10/12 11AM	<a href="#">Topchic &amp; Colorance Revealed - Build Your Foundation</a>
Tuesday 10/12 2PM	<a href="#">New Products Revealed – 30 Minutes LIVE</a>
Wednesday 10/13 12PM	<a href="#">New Products Revealed – 30 Minutes LIVE</a>
Wednesday 10/13 1PM	<a href="#">Goldwell Revealed - Color My Textured Hair</a>
Wednesday 10/13 3PM	<a href="#">Goldwell Revealed - Minimal Work with Maximum Results</a>
Tuesday 10/19 11AM	<a href="#">New Products Revealed – 30 Minutes LIVE</a>
Tuesday 10/19 12PM	<a href="#">Customized Styling Revealed – LIVE Techniques &amp; Inspiration</a>
Tuesday 10/19 2PM	<a href="#">Dimensions of Toning</a>
Wednesday 10/20 10AM	<a href="#">Topchic &amp; Colorance Revealed - Build Your Foundation</a>
Wednesday 10/20 12PM	<a href="#">Elumen Paint Box</a>
Tuesday 10/26 11AM	<a href="#">New Products Revealed – 30 Minutes LIVE</a>
Tuesday 10/26 12PM	<a href="#">NuWave Experience</a>
Tuesday 10/26 2PM	<a href="#">Dimensions of Light</a>
Wednesday 10/27 12PM	<a href="#">Kerasilk Experience - Smoothing &amp; DeFrizz Services</a>
Wednesday 10/27 2PM	<a href="#">Dimensions of Creativity</a>

All class times are listed in Eastern Standard Time. Use this [link](#) to convert the time to your city.

Scan me with your smartphone or click on the linked class topics to register



“To be the best, you have to learn from the best”



KAO SALON  
**VIRTUAL**  
**EDUCATION.US**  
 GOLDWELL. KMS ORIBE

“To be the best, you have to learn from the best”

Dear Stylist,

Thank you for your continued investment in your education with Kao Salon. We wish you many successes in this holiday season.

- *Charles Elias, Associate Director of Education*

Scan me with your smartphone or click on the linked class topics to register



All class times are listed in Eastern Standard Time. Use this [link](#) to convert the time to your city.

Date & Time	Class Topic
Tuesday 11/2 12PM	<a href="#">Dimensions of Light</a>
Tuesday 11/2 12PM	<a href="#">Goldwell Revealed – Color Challenged Solved</a>
Tuesday 11/2 2PM	<a href="#">New Products Revealed – 30 Minutes LIVE</a>
Wednesday 11/3 11AM	<a href="#">Customized Styling Revealed - LIVE Techniques &amp; Inspiration</a>
Wednesday 11/3 1PM	<a href="#">Dimensions of Toning</a>
Tuesday 11/9 11AM	<a href="#">New Products Revealed – 30 Minutes LIVE</a>
Tuesday 11/9 12PM	<a href="#">Elumen Paint Box</a>
Tuesday 11/9 2PM	<a href="#">Dimensions of Creativity</a>
Wednesday 11/10 11AM	<a href="#">Kerasilk Experience - Smoothing &amp; DeFrizz Services</a>
Wednesday 11/10 1PM	<a href="#">Goldwell Revealed - Minimal Work with Maximum Results</a>
Tuesday 11/16 10AM	<a href="#">New Products Revealed – 30 Minutes LIVE</a>
Tuesday 11/16 11AM	<a href="#">Goldwell Revealed - Portfolio Review</a>
Tuesday 11/16 1PM	<a href="#">Topchic and Colorance Revealed - Grey Coverage</a>
Wednesday 11/17 10AM	<a href="#">Topchic &amp; Colorance Revealed - Build Your Foundation</a>
Wednesday 11/17 12PM	<a href="#">Goldwell Revealed - Upgrade Your Service Potential</a>



KAO SALON  
**VIRTUAL**  
EDUCATION.US  
GOLDWELL. KMS ORIBE

## Class Descriptions

**Customized Styling Revealed – LIVE Techniques & Inspiration:** This class will encourage you and your team to take your styling skills to the next level. Walk away equipped with quick-hit techniques and inspirational braiding tricks that will not only elevate your skillsets but also promote retail.

**Dimensions of Light:** Explore Goldwell's vast portfolio of lightening products. No matter what dimension of lightness you are looking to achieve, we've got you covered. **(up to 90 minutes)**

**Dimensions of Toning:** Continuing on your Dimensions of Light journey, learn expert toning and customizing the finished results after lightening services.

**Dimensions of Creativity:** Now that you've mastered the perfect lightening and toning, open the door to endless opportunities with your creativity.

**Elumen Paintbox:** Expand your pursuit to learn how to achieve brilliant color results with exceptional shine and durability with Elumen. This technology allows you to enhance your creativity and offer new, brilliant, long-lasting color results for your clients.

**Goldwell Revealed – Portfolio Review:** Looking to know more about what we have to offer? Join us in this conversation of a top line overview of our innovative portfolio. **(up to 90 minutes)**

**Goldwell Revealed – LIVE Color My Textured Hair:** Explore inspirational highlighting techniques that are simple, yet could be dramatic. Discover formula's that avoid damage and maintain the integrity of textured hair. Have fun in this class learning on-trend color placements that achieve beautiful blondes, brunettes and rich reds.

**Goldwell Revealed – Minimal Work with Maximum Results:** Maximize your color results with simple techniques, ready to use patterns and a breakdown of placement theory. This class will provide you the ultimate creativity to develop your own custom techniques.

**Goldwell Revealed - Upgrade Your Service Potential:** Grow your knowledge and services with Goldwell's quick and easy portfolio options, like @PurePigments, Power Toning, BondPro+, Men ReShade, Brighteners & Soft Color. Upgrade your income in 0 to 20 minutes!

**Kerasilk Experience - Smoothing & De-Frizz Services:** From reducing and reshaping curl, to smoothing and softening unruly hair, the Kerasilk Keratin Treatment is a must-have addition to your texture portfolio. Give your clients a luxury experience with Color, Control, Repower, Revitalize & Reconstruct services. **(up to 90 minutes)**

**New Products Revealed – 30 Minutes LIVE:** Get the scoop on what's new and tips from Goldwell, KMS, and VARIS.

**NuWave Experience:** WORK WITH THE TEXTURE, NOT AGAINST IT! Goldwell introduces an incredible new innovation in texture and shape change: NUWAVE. The first semi-permanent shape change service for effortless waves and smart process control. IT'S REVOLUTIONARY!

**Topchic & Colorance Revealed – Build Your Foundation:** Experience the world of Topchic and Colorance. Gain confidence using semi, demi & permanent hair color effectively within the Goldwell Service Cycle. Learn the tips and tricks that make Goldwell the perfect partner to all of your hair color needs. **(up to 90 minutes)**

**Topchic & Colorance Revealed - Color Challenges Solved:** Professional salon solutions for turning color challenges into thrilling results. From removing color, coloring darker, tinting back, to overcoming color fading, we've got you covered.

**Topchic & Colorance Revealed - Grey Coverage:** Explore grey coverage options that are as diverse as your salon clients. Discover the differences in coverage options, techniques, and customizable formulations for stubborn grey.

**“To be the best, you have to learn from the best”**